

PUBLIC AUCTION

BUILDING SOLD – DOWNSIZING - SURPLUS TO THE CONTINUING OPERATIONS OF A POST PRESS EQUIPMENT DEALER & REBUILDER INCLUDING REBUILT HEIDELBERG & STAHL FOLDERS, KNIFE FOLDERS, HEIDELBERG PRESS, PUNCH, LIFT TRUCK, TOOLROOM, BUSS DUCT, SHOP & SUPPORT EQUIPMENT

Surplus to the Continuing Operations

JAS GRAPHICS, INC.

5870 Elmwood Ave. – Indianapolis, Indiana 46203
8 Miles Southeast of Downtown Indianapolis, IN

SALE DATE
TUESDAY, OCTOBER 16TH
STARTING: 10:00 AM

INSPECTION: Monday, October 15th
from 10:00 AM to 4:00 PM



CINCINNATI
INDUSTRIAL
AUCTIONEERS

Contact Information
2020 Dunlap St.
Cincinnati, Ohio 45214
Phone 513-241-9701
Fax 513-241-6760

auctioneers | appraisers | since 1961 www.cia-auction.com

AUCTION NOTICE

After 20+ Years of Sales and Service at our current location JAS Graphics has decided to move to a smaller facility. In no way will this effect our support and service of your press equipment needs. All items must be removed by October 31st.



NEW
2005

32" X 48" Heidelberg Stahl Model Model TH-82 6/4/4 Continuous Feed Folder

FIRST CLASS MAIL!

PRE-SORT
FIRST CLASS
U.S. POSTAGE
PAID
CINCINNATI, OHIO
PERMIT NO. 3593



Important Mail

TO BE DIRECTED TO THE ATTENTION
OF EXECUTIVE PERSONNEL

Surplus to the Continuing Operations

JAS GRAPHICS, INC.

5870 Elmwood Ave. – Indianapolis, Indiana 46203
8 Miles Southeast of Downtown Indianapolis, IN

SALE DATE:
Tuesday, October 16th
Starting at 10:00 AM

INSPECTION:
Monday, October 15th from 10:00 AM to 4:00 PM



6-Plate Main &
6-Plate 8-Page

26" X 40" Stahl Model TD-66/6-4-RD-T Continuous Feed Folder



Complete
Rebuild

14" X 26" Stahl Model S1426B-4-PAR-3 Continuous Feed Folder

DIRECTIONS: From Downtown Indianapolis Proceed East on Southeastern Ave for 4.7 Miles to Right Turn onto S. Arlington Ave. Continue 1.7 Miles to Right Turn onto Elmwood Ave. Proceed 0.2 Mile to Sale Site on Right. Watch for Auction Parking and Auction Signs.

IMPORTANT NOTICE: Although information has been obtained from sources deemed reliable, the auctioneer makes no warranty or guarantee, expressed or implied, as to the accuracy of the information here-in contained. It is for this reason that buyers should avail themselves of the opportunity to make inspection prior to the sale.

TERMS OF SALE: All equipment described herein will be sold "as is", "where is" to the highest bidder or bidders for cash in accordance with our regular terms and conditions of sale. Unless other satisfactory arrangements are made, a **25% deposit** in cash, certified or cashier's check payable to Cincinnati Industrial Auctioneers, Inc., **is required on all purchases.** Firm and personal checks accepted only if accompanied by a letter from your bank guaranteeing your funds. All sales are subject to state and/or local taxes unless a signed exemption form is presented at the time of purchase. **All balances are due at the conclusion of the sale.** No merchandise may be removed while the sale is in progress. **All bidders must comply with our Standard Terms of Sale,** copies of which will be available at the sale site or can be obtained from our website.

MAIL IN BIDS: Mail in bids will be accepted with a 25% deposit.

15% ONSITE BUYERS PREMIUM • 18% ONLINE BUYERS PREMIUM

Auctioneers

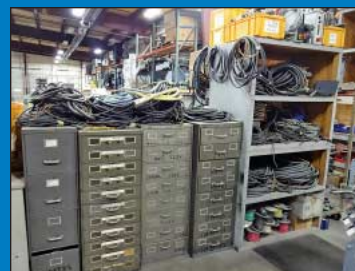
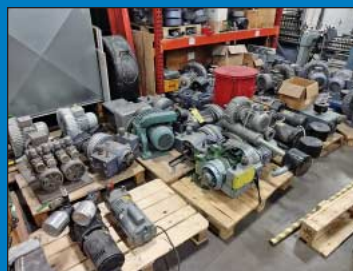
Cincinnati Industrial Auctioneers, Inc. – IN License No. AC63004471

Jeffrey L. Luggen – IN License No. AU01051612

Joseph M. Luggen – IN License No. AU11200137



Stahl and Heidelberg Pile Feed Folders, 26" X 40" Stahl TD-66 Continuous Feed Folder w/ (6) Plate Main, 30" X 50" Heidelberg Folder



(2) Heidelberg Delivery Tables, (2) Stahl TD66 Knife Folders, Clamco L-Sealer and Shrink Tunnel, (75) Vacuum Pumps, Electrical



Heidelberg QM-46 Press, Kluge, 3HP Super Vertical Mill, 20" X 60" Takang Gap Bed Lathe, 15" X 50" South Bend Lathe

CONTINUOUS FEED FOLDERS

32" X 48" Heidelberg Stahl Model Model TH-82 6/4-4 Continuous Feed Folder; S/N 1224406533, (6) Plate Main Unit, 8-Page, 16-Page, SAK-94 Delivery (New 2005)
 30" X 50" Heidelberg Model B-30/4-BRD Continuous Feed Folder; S/N 702764-160NJ212, DCT500 Control, 8-Page and Delivery, Pre-Slitters Shafts (Complete Reconditioned)
 26" X 40" Stahl Model TD-66/4-RD-T Continuous Feed Folder; S/N 68120-230064, Stahl Digital Control, 8-Page 6-Plate, 16-Page 4-Plate, and Delivery (1997)
 26" X 40" Stahl Model TD-66/4-4-RD-T Continuous Feed Folder; S/N 78621-243105, Stahl Digital Control, 6-Plate Main, 8-Page, 16-Page, Delivery, Sound Guards (1997)
 26" X 40" Stahl Model TD66/4-RD Continuous Feed Folder; S/N 701199-281035, 8-Page and Delivery Table, DCT500 Digital
 26" X 40" Stahl Model TF66/4-FE Pile Feed Folder; S/N 32387-129038, with 8-Page T56 and Delivery (New Rollers in Main Unit)
 22" X 35" Stahl TF56 4/4 Continuous Feed Folder; S/N N/A, 8-Page and Delivery
 14" X 26" Stahl Model S1426B-4-PAR-3 Continuous Feed Folder; S/N 141MD0027, DCT500 Control, with 8-Page, 16-Page, Delivery (1999) **Completely Rebuilt, Stripped to Frame Rebuild**
 14" X 26" Stahl Model S1426B-45-PAR-3 Continuous Feed Folder; S/N 1411J0088, with 8-Page, 16-Page, and Delivery (1996)
 14" X 26" Stahl Model S1426B-4-PAR-3 Continuous Feed Folder; S/N 141ML0084, DCT500 Control, 8-Page, 16-Page and Delivery

PILE FEED FOLDERS

14" X 20" Heidelberg Model TI-36/4-FI Pile Feed Folder; S/N 703463-294018, with 8-Page Attachment, STA-30 Stacker, Built in Batch Counter, Small Work Conveyor
 12" X 20" Stahl Model 1220C-4-P-3 Pile Feed Folder; S/N 120ML0105, DCT5000 Control, 8-Page, 16-Page, and Delivery
 12" X 20" Stahl Model 1220B-4-P-3 Pile Feed Folder; S/N 120JD0028, 8-Page, Delivery

DELIVERY TABLES

Heidelberg SAK-66 Delivery Table (2005)
 Heidelberg SAK-94 Delivery Table (2006)
 (10) Various Delivery Tables by Stahl

KNIFE FOLDER

(2) Stahl Model TD66 Knife Folders with Stahl Digital Controls

PRESS

12" X 18" Heidelberg Model QM46-2 Two-Color Offset Press; S/N 961280, 1.7 Million Impressions, Spray Powder Unit, Plate Bender, Plate Punch (1999)

HOT FOIL STAMP

14" X 20" Kluge Hot Foil Stamp; S/N N/A

PUNCH

13" Sickenger Model USP-13 Punch; S/N 1033S0297

L-SEALERS AND SHRINK TUNNELS

18" X 22" Clamco Model 6725VS L-Sealer; S/N 67342, with 20" Wide X 10" High Clamco Model 6022 Shrink Tunnel; S/N 6536, PLC Control
 20" X 8" High Weldotron Model 7221 Shrink Tunnel; S/N EJ96472

STRAPPERS

(2) Strapex Strappers

PAPER DRILLS

Challenge Model MS-10A Three Spindle Paper Drill; S/N 60797

STITCHERS

Bostitch Model 7 Single Head Wire Stitcher; S/N 778325
 Bostitch Model 17AW Single Head Wire Stitcher; S/N 3630
 Bostitch Model 17 Wire Stitcher
 Boston Model 2 Single Head Wire Stitcher
 (25) Stitching Heads by Hohner and Others

HARDWARE

Large Quantity Hardware, Including Nuts, Bolts, Springs, O-Rings, Pins

VACUUM PUMPS

(75) Various Size Vacuum Pumps Up to 10 HP

ELECTRICAL

Large Quantity of Electrical Including Breakers, 250 Volt, 120 Volt, 230 Volt Pumps, Mains, Starters, Contactors, Jams, Wire, Connectors, Distribution Boxes

LATHES

20" X 60" Takang Gap Bed Engine Lathe; S/N 200701, 16" 3-Jaw Chuck, 1,800 RPM, Threading, 3" Spindle Bore
 15" X 50" South Bend Model Nordic 15 Engine Lathe; S/N DN15810731AF55, 8" 3-Jaw Chuck, 2,000 RPM, 1.75" Spindle Bore, Threading

15" X 60" Sharp Model 15605 Gap Bed Engine Lathe; 8" 3-Jaw Chuck, 1,800 RPM, 1.75" Spindle Bore, Threading

VERTICAL MILL

3 HP Super Model X6325 Vertical Milling Machine; S/N 066199, Fagor DRO, 10" X 54" Table (2006)

MISCELLANEOUS MACHINERY

12" Disc and 6" Belt Jet Combo Sander; S/N 11070154
 7" X 12" Wilton Model 3410 Horizontal Band Saw; S/N 04128533
 25 Ton Dayton 3Z916A Hydraulic H-Frame Press
 18" Disc Sander
 34" X 22" X 16" Central Pneumatic Blast Cabinet
 5 HP Ingersoll Rand Vertical Tank Air Compressor

STRETCH WRAPPER

Synergy Hydro Rotary Stretch Wrapper

SCALE

5,000 Lb. Weigh-Tronix Digital Platform Scale

BUSS DUCT

216' General Electric 277/480 Volt Cat No. FVAN-1-362 Copper Buss Duct; 225 Amp, 3-Phase, 110/Single, 220/ Single Phase, 230/3 Phase Buss Plugs

LIFT TRUCK

15,000 LB Caterpillar Model GC70K LP

Gas Solid Tire Lift Truck; S/N AT8900578, 188" Lift Height, 72" Forks, 14,249 Hours

HYDRAULIC TRAILER

1999 - 14' Life Time Model EPG4-514 Gooseneck Hydraulic Elevating Platform Trailer; VIN # 1LPGE2146X15EB044, 14,854 Lb. GVWR, Trailer Weight 4,854 Lb., 5' X 14' Platform

SHOP EQUIPMENT

Shop Equipment Including; Toolbox, Parts Washing Tanks, Bench Vises, Rubbermaid Carts, Arbor Presses, Drum Fans, Pedestal Fans, Fireproof Cabinet, Pallet Trucks, Aluminum Dock Plates, Generator, Pressure Washer, Step Ladders, Hand Tools, Drills

WEBCAST BIDDER INSTRUCTIONS

> **Bidders in the United States** will receive approval forms from our office upon registering for the auction on www.bidspotter.com, pending the Auctioneers review of the information provided you will be approved at the Auctioneers discretion.
 > **Bidders outside of the United States** must post a deposit of approx. 25% of their planned spending budget or \$2,500.00 minimum with Cincinnati industrial auctioneers in order to be approved to bid. Those who do not post the deposit will not be approved. **period.**



216' GE Copper Buss Duct, Misc. Fabrication Machinery, 15,000 LB Cat LP Gas Lift Truck, 1999-14' Life Time Hydraulic Platform Trailer